

LINE CHART

LINE	BEARING	HORIZ DIST	LINE	BEARING	HORIZ DIST
L1	S58°16'58"E	160.54'	L23	S60°24'31"E	209.29'
L2	N88°15'45"E	565.55'	L24	S58°13'17"E	147.65'
L3	S10°44'43"W	463.37'	L25	S47°45'45"E	500.12'
L4	N83°39'31"W	327.63'	L26	N87°22'03"W	146.25'
L5	N83°14'26"W	300.90'	L27	S88°28'32"W	194.67'
L6	N84°22'42"W	390.27'	L28	S78°16'14"W	112.45'
L7	N82°17'10"W	451.15'	L29	S68°45'47"W	98.46'
L8	N8°14'57"E	443.93'	L30	S64°56'53"W	241.78'
L9	S8°16'03"W	478.06'	L31	S61°05'46"W	84.13'
L10	N76°00'16"W	351.79'	L32	S51°10'42"W	117.45'
L11	N77°46'25"W	307.10'	L33	S49°03'40"W	159.74'
L12	N76°42'53"W	419.23'	L34	S69°28'37"W	141.32'
L13	N73°51'35"W	269.19'	L35	S66°54'17"W	83.05'
L14	N49°06'21"E	136.66'	L36	S68°59'24"W	100.53'
L15	N51°10'42"E	114.18'	L37	N62°07'56"W	316.09'
L16	N61°05'46"E	80.52'	L38	S42°34'31"E	62.25'
L17	N64°56'53"E	239.78'	L39	S21°05'39"W	117.44'
L18	N68°45'47"E	94.97'	L40	N83°53'57"E	105.60'
L19	N78°16'14"E	107.27'	L41	N58°13'17"W	137.58'
L20	N88°28'32"E	190.90'	L42	N60°24'31"W	201.96'
L21	S87°22'03"E	181.42'	L43	N47°45'45"W	569.75'
L22	S47°45'45"E	32.05'			

CURVE CHART

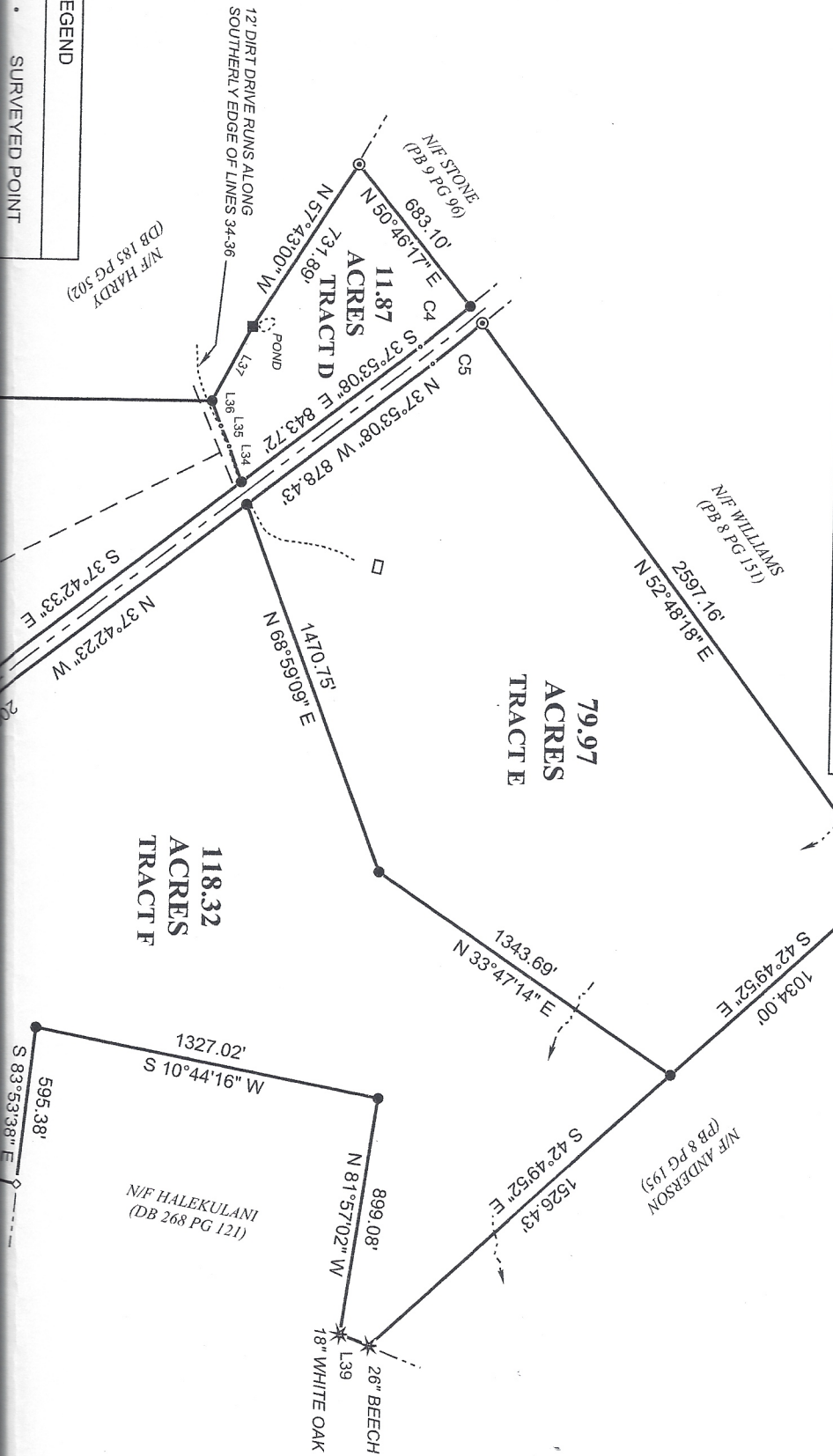
CURVE	BEARING	HORIZ DIST	RADIUS	ARC
C1	N82°20'16"E	274.68'	1010.07'	275.53'
C2	S75°42'23"E	504.14'	884.64'	511.22'
C3	S41°29'52"E	554.07'	2944.06'	554.89'
C4	S39°26'36"E	241.63'	6919.50'	241.64'
C5	N39°50'27"W	240.87'	6999.50'	240.88'
C6	N41°28'50"W	539.53'	2864.06'	540.33'

ALL CORNERS FOUND UNLESS OTHERWISE INDICATED
ALL DISTANCES "GROUND"

POINT OF COMMENCEMENT:
FROM A "PK" NAIL FOUND AT THE INTERSECTION OF
SISSON BRIDGES RD. AND COLUMBUS GRANVADE ROAD:
S77°19'20"E FOR 1886.66' TO A 1/2" REBAR FOUND; THE
POINT OF BEGINNING (POB)



LEGEND
SURVEYED POINT



THIS SURVEY BASED ON INFORMATION IN THE PUBLIC RECORD AND/OR INFORMATION PROVIDED BY THE CLIENT, AND UPON EVIDENCE RECOVERED AT THE SITE; AND REPRESENTS A PROFESSIONAL OPINION. IT IS THEREFORE SUBJECT TO CHANGE UPON INTRODUCTION OF VALID NEW EVIDENCE OR INFORMATION.